

Breast Imaging, Cardiac, Gastrointestinal, Genitourinary, Musculoskeletal, Neuroradio



Breast Imaging, Cardiac, Gastrointestinal, Genitourinary, Musculoskeletal, Neuroradio

**March 21-25, 2011**

**MGH/BWH  
RADIOLOGY  
REVIEW**

*An Intensive Review of Radiology through a  
Series of Lectures and Case Review Sessions*

Program Co-Directors

Theresa C. McLoud, MD • Barbara N. Weissman, MD

**Marriott Boston Long Wharf  
Boston, Massachusetts**



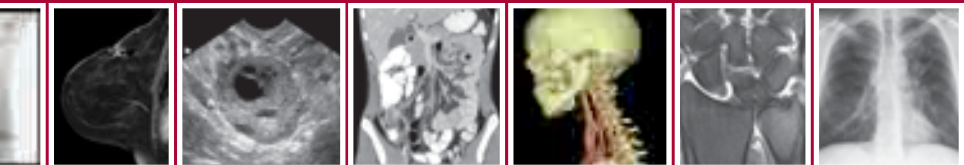
MASSACHUSETTS  
GENERAL HOSPITAL  
IMAGING



BRIGHAM AND  
WOMEN'S HOSPITAL  
DEPARTMENT OF RADIOLOGY



HARVARD MEDICAL SCHOOL  
Department of Continuing Education



## OBJECTIVES

After completing this course, participants will have a better understanding of

- The most effective way to image patients with a variety of disease entities
- Imaging findings in various abnormal conditions
- The strengths and limitations of different diagnostic imaging procedures
- How to optimize newer techniques such as MRI, CT and Ultrasound

## *Residents only “Hot Seat” Sessions*

**Monday, Tuesday and Thursday at noon**

Thoracic, Neuroradiology, Gastrointestinal, Emergency Radiology, Cardiac, Breast Imaging, Musculoskeletal, Ultrasound, Pediatrics

Participants will be asked individually to discuss unknown cases with a time limit for each case. The instructor will then review each case and the differential diagnoses.

***LIMITED SEATING - REGISTRATION LIMITED TO RESIDENTS ONLY!  
EACH OF THE NINE SESSIONS HAS ONLY 20 SEATS.***

***FIRST COME FIRST SERVE -- you must pre-register when you register for the course in order to participate.***

Please see registration form. A boxed lunch will be provided.

## REGISTRATION INFORMATION

For specific tuition fees, see the registration form. All foreign payments must be made by a draft on a United States Bank or by Visa or MasterCard.

If paying by check, please make payable to Harvard Medical School and mail with completed registration form to Harvard Medical School Department of Continuing Education, PO Box 825, Boston, MA 02117-0825.

If paying by credit card, please register online at [www.cme.hms.harvard.edu/courses/mghbwh](http://www.cme.hms.harvard.edu/courses/mghbwh). Telephone, fax or mail-in registration with credit card payment is not accepted. Inquiries may be directed to the above address; made by phone: (617) 384-8600, Monday through Friday, 10 AM to 4 PM (EST); or by email: [hms-cme@hms.harvard.edu](mailto:hms-cme@hms.harvard.edu). Upon receipt of your registration form an email confirmation from the HMS-DCE office will be sent to you. Therefore, be sure to include an email address that you check daily/frequently. Your email address is used for critical information about the course including: registration confirmation, course evaluation and certificate.

## ACCREDITATION

Harvard Medical School is accredited by the Accreditation Council for Continuing Medical Education (ACCME) to provide continuing medical education for physicians.

Harvard Medical School designates this course for a maximum of 42.75 *AMA PRA Category 1 Credits*™. Each physician should only claim credit commensurate with the extent of their participation in the activity.

## ONLINE INFORMATION

To register or view this course information online, visit Harvard Medical School Department of Continuing Education's home page: [www.cme.hms.harvard.edu/courses/mghbwh](http://www.cme.hms.harvard.edu/courses/mghbwh)

☐ To ensure proper registration, please add the first three characters of the source code found at the bottom of the registration form.

## REFUND POLICY

A handling fee of \$60 is deducted for cancellation. Refund requests must be received by mail or fax one week prior to the course. No refunds will be made thereafter.

## COURSE LOCATION / ACCOMMODATIONS

All sessions will be held at the Marriott Boston Long Wharf, 296 State Street, Boston, MA, 02109, phone (617) 227-0800. Hotel rooms in Boston are limited. You are urged to make your reservations early. A limited number of rooms have been reserved at the Boston Marriott Long Wharf, (617) 227-0800 until February 26th, 2011. Please specify that you are enrolled in the MGH/BWH Radiology Review course to receive a reduced room rate.

# MONDAY MARCH 21

7:00 Registration/Continental Breakfast

## MUSCULOSKELETAL

8:00	Metabolic Bone Disease	Kattapuram
8:40	Arthritis	Weissman
9:00	Orthopedic Trauma	Lawrason
9:40	MRI Shoulder	Small
10:00	Questions	
10:05	BREAK	
10:20	MRI Knee	Huang
11:00	MSK Infections	Lawrimore
11:20	Bone Tumors	Rosenthal
12:00	LUNCH RECESS	

12:05

## RESIDENTS ONLY "HOT SEAT" DISCUSSION

MUST Pre-register -- Only 20 seats per session

Thoracic -- McCloud

Neuroradiology -- Mukundan

Gastrointestinal -- Uppot

## PEDIATRICS

1:30	Neonatal and Infant Chest	Sagar
2:00	Airway / Chest	Lee
2:30	Musculoskeletal	Bixby
3:00	BREAK	
3:15	Neuroradiology	Young-Poussaint
3:45	Gastrointestinal	Nimkin
4:15	Cardiac	Sena
5:00	DINNER RECESS	

## OPEN CASE REVIEW SESSIONS

6:30	Breast Imaging	Zorn
7:20	Genitourinary	Cronin
8:10	Cardiac	Abbara
9:00	ADJOURN	

# TUESDAY MARCH 22

7:00 Continental Breakfast

## GASTROINTESTINAL RADIOLOGY

7:15	Gastrointestinal Case Review	Abdel-Dayem
8:00	Multimodality Imaging of Diseases of the GI Tract: Part I	Shortsleeve
8:30	Multimodality Imaging of Diseases of the GI Tract: Part II	Shortsleeve
9:00	Imaging the Pancreas	Guimaraes
9:20	Hepatic Biliary and Splenic Imaging	Saini
10:05	Questions	
10:10	BREAK	
10:25	Imaging Abdominal Trauma	Avery
10:55	Abdominal Ultrasound	Laing
11:45	Questions	
11:50	LUNCH RECESS	

12:00

## RESIDENTS ONLY "HOT SEAT" DISCUSSION

MUST Pre-register -- Only 20 seats per session

Emergency Radiology -- Avery

Cardiac -- Steigner

Breast Imaging -- Zorn

## BREAST IMAGING

1:00	Evaluation of Calcifications	Kopans
1:30	Imaging of Breast Masses	Raza
2:15	Breast Ultrasound	Freer
2:35	Breast MRI	Rafferty
3:00	BREAK	

## Tuesday continued

### CARDIAC

3:15	Congenital Heart Disease	Sena
4:15	Acquired Heart Disease	Rybicki
5:30	Imaging of Coronary Artery Disease	Abbara
6:00	ADJOURN	

## WEDNESDAY MARCH 23

7:00 Continental Breakfast

### THORACIC

7:15	Chest Case Review	Sharma
8:00	Interstitial Lung Disease	McCloud
8:30	Airways	Digumarthy
9:00	The Pleura	Gilman
9:30	Pulmonary Infections	Abbott
10:00	Questions	
10:05	BREAK	
10:25	Mediastinum	Hunsaker
11:00	Lung Cancer, Nodules	Trotman-Dickerson
11:30	Trauma-Chest	Gilman
12:00	LUNCH RECESS	

### OB/GYN ULTRASOUND

1:30	US Multiple Gestations	Frates
2:00	1st Trimester	Laing
2:30	Gynecology-Uterine Ultrasound	Frates
3:00	Questions	
3:05	BREAK	
3:20	Anomalies Abdomen	Durfee
3:50	Anomalies CNS, FACE	Benacerraf
4:20	Anomalies Cardiac, Thoracic	Benacerraf
5:00	Placenta	Durfee
5:20	Questions	
5:25	ADJOURN	

## THURSDAY MARCH 24

7:00 Continental Breakfast

### Nuclear Medicine

7:15	Nuclear Medicine Case Review	Millstine
8:00	Genitourinary	Britz-Cunningham
8:30	Lung	Scott
9:00	Bone	Scott
9:30	Pediatric Nuclear Medicine	Lim
9:50	BREAK	
10:05	PET and PET-CT	Mahmood
10:45	Thyroid and Therapies	Kim
11:15	Cardiac	Dorbala
11:50	Questions	
11:55	LUNCH RECESS	

12:00

### RESIDENTS ONLY "HOT SEAT" DISCUSSION

MUST Pre-register -- Only 20 seats per session

Musculoskeletal Imaging -- Kamath

Ultrasound -- Laing

Pediatrics -- Gee

## Thursday continued

### GENITOURINARY RADIOLOGY

1:00	Ureter, Bladder, Urethra, and Hysterosalpingography	Tuncali
1:45	Genitourinary Ultrasound	Laing
2:25	BREAK	
3:00	Kidneys and Adrenal	Tuncali
3:45	Gynecology -Ovarian Ultrasound	Laing
4:15	CT/MRI of the Reproductive Organs	Sadow
5:00	ADJOURN	

## FRIDAY MARCH 25

7:00 Continental Breakfast

### TRAUMA

7:15	Trauma: Case Review	Duran-Mendicuti
8:00	Trauma: Facial	Avery
8:30	Trauma: Cardiovascular	Walker
9:00	Trauma: Spine	Khurana
9:30	CNS Trauma and Intracranial Hemorrhage	Ptak
9:55	Questions	
10:00	BREAK	

### NEURORADIOLOGY

10:15	Imaging the Spine	Schaefer
10:45	Vascular, Degenerative and Metabolic Disease	Rincon
11:30	Tumors, Infections and Inflammatory Disease	Buchbinder
12:15	LUNCH RECESS	
1:30	Eyes, Ears, Nose and Throat, the Essentials	Curtin

### VASCULAR / INTERVENTIONAL

2:30	Nonvascular Interventions	Thabet
3:15	BREAK	
3:30	Venous Vascular Intervention	Fan
3:45	Arterial Vascular Intervention	Walker
4:30	Vascular Case Review	Rabkin
5:15	ADJOURN	

Please Note: Program changes/substitutions may be made without notice.



**MGH/BWH Radiology Review 2011**

[www.cme.hms.harvard.edu/courses/mghbwh](http://www.cme.hms.harvard.edu/courses/mghbwh)

# FACULTY

Breast Imaging, Cardiac, Gastrointestinal, Genitourinary, Musculoskeletal

## GUEST

### **Faye C. Laing, MD**

Professor of Radiology, Georgetown University Medical Center, Division of Abdominal Imaging, Washington DC

### **John W. Millstine, MD**

Nuclear and Diagnostic Radiologist, Scottsdale Medical Imaging, Ltd., Scottsdale, AZ

## HARVARD MEDICAL SCHOOL

### **Suhny Abbara, MD**

Associate Professor of Radiology, HMS; Director, Cardiovascular Imaging Section; Director of Education, Cardiac MR and CT Program, MGH

### **Gerald F. Abbott, MD**

Senior Lecturer on Radiology, HMS; Associate Radiologist, Division of Thoracic Imaging, MGH

### **Essmaeel H. Abdel-Dayem, MD**

Instructor in Radiology, HMS; Assistant Radiologist, Division of Abdominal Imaging and Intervention, MGH

### **Laura L. Avery, MD**

Instructor in Radiology, HMS; Assistant Radiologist, Division of Emergency Imaging, MGH

### **Beryl R. Benacerraf, MD**

Clinical Professor of Obstetrics, Gynecology and Reproductive Biology, HMS; Division of Ultrasound, BWH

### **Scott Britz-Cunningham, MD, PhD**

Instructor in Radiology, HMS; Division of Nuclear Medicine, BWH

### **Bradley R. Buchbinder, MD**

Instructor in Radiology, HMS; Associate Radiologist, Division of Neuroradiology, MGH

### **Leonard P. Connolly, MD**

Assistant Professor of Radiology, HMS; Associate Radiologist, Nuclear Imaging, Division of Molecular Imaging and PET-CT, MGH

### **Carmel G. Cronin, MD**

Instructor in Radiology, HMS; Division of Abdominal Imaging and Intervention, BWH

### **Hugh D. Curtin, MD**

Professor of Radiology, HMS; Chief of Radiology, Massachusetts Eye & Ear Infirmary

### **Subba R. Digumarthy, MD**

Instructor in Radiology, HMS; Assistant Radiologist, Division of Thoracic Imaging, MGH

### **Sharmila Dorbala, MD, FACC**

Assistant Professor of Radiology, HMS; Director of Nuclear Cardiology; Co-Director of Non-Invasive Cardiovascular Fellowship Training Program, BWH

### **Alejandra Duran-Mendicuti, MD**

Instructor in Radiology, HMS; Division of Emergency Radiology, Department of Radiology, BWH

### **Sara M. Durfee, MD**

Assistant Professor of Radiology, HMS; Division of Ultrasound, BWH

### **Kirsten Ecklund, MD**

Assistant Professor of Radiology, HMS; Associate Vice Chair of Radiology, Director of Body MR Imaging, Children's Hospital Boston

### **Chieh-Min Fan, MD**

Assistant Professor of Radiology, HMS; Division of Angiography and Interventional Imaging, BWH

### **Mary C. Frates, MD**

Associate Professor of Radiology, HMS; Assistant Director, Division of Ultrasound, BWH

### **Phobe Freer, MD**

Instructor in Radiology, HMS; Assistant Radiologist, Division of Breast Imaging, MGH

### **Michael S. Gee, MD, PhD**

Instructor in Radiology, HMS; Assistant Radiologist, Pediatric Imaging, Division of Abdominal Imaging and Intervention, MGH

### **Matthew D. Gilman, MD**

Instructor in Radiology, HMS; Assistant Radiologist, Associate Director, Thoracic Imaging Division, Associate Director, Thoracic and Cardiac Imaging Fellowship, MGH

### **Alexander R. Guimaraes, MD, PhD**

Assistant Professor of Radiology, HMS; Assistant Radiologist, Abdominal Imaging and Intervention, Center for Molecular Imaging Research, MGH

### **Ambrose J. Huang, MD**

Instructor in Radiology, HMS; Assistant Radiologist, Division of Musculoskeletal Imaging and Intervention, MGH

### **Andetta R. Hunsaker, MD**

Assistant Professor of Radiology, HMS; Director, Division of Thoracic Radiology, BWH

### **Ravi S. Kamath, MD, PhD**

Instructor in Radiology, HMS; Assistant Radiologist, Musculoskeletal Imaging and Intervention, MGH

### **Susan V. Kattapuram, MD**

Associate Professor of Radiology, HMS; Associate Radiologist, Musculoskeletal Imaging and Intervention; Director, International Visiting Fellowship Program; Director, National Visiting Fellowship Program, MGH

### **Bharti Khurana, MD**

Instructor in Radiology, HMS; Division of Emergency Radiology, BWH

### **Chun K. Kim, MD**

Associate Professor of Radiology, HMS; Clinical Director, Division of Nuclear Medicine and Molecular Imaging, BWH

### **Daniel B. Kopans, MD**

Professor of Radiology, HMS; Radiologist, Division of Breast Imaging, MGH

### **J. Nash Lawrason, MD**

Assistant Professor of Radiology, HMS; Associate Radiologist, Division of Emergency Imaging, MGH

**Tara Lawrimore, MD**

Instructor in Radiology, HMS; Assistant Radiologist, Division of Musculoskeletal Imaging and Intervention, MGH

**Janie M. Lee, MD**

Assistant Professor of Radiology, HMS; Assistant Radiologist, Breast Imaging, Research Staff, Institute for Technology Assessment (ITA), MGH

**Ruth Lim, MD**

Instructor in Radiology, HMS; Assistant Radiologist, Pediatric Imaging; Nuclear Imaging, Division of Molecular Imaging and PET-CT, MGH

**Umar Mahmood, MD, PhD**

Associate Professor of Radiology, HMS; Associate Radiologist, Nuclear Imaging, Division of Molecular Imaging and PET-CT, MGH

**Theresa C. McLoud, MD**

Professor of Radiology, HMS; Director of Education; Associate Radiologist-in-Chief, Division of Thoracic Imaging, MGH

**Srinivasan Mukundan, Jr, MD, PhD**

Associate Professor of Radiology, HMS; Section Head of Neuroradiology, BWH; Adjunct Associate Professor of Biomedical Engineering and Chemistry, Duke University, Durham, NC

**Katherine Nimkin, MD**

Assistant Clinical Professor of Radiology, HMS; Assistant Radiologist, Pediatric Imaging, MGH

**Thomas Ptak, MD, PhD**

Assistant Professor of Radiology, HMS; Assistant Radiologist, Division of Emergency Imaging, MGH

**Dmitry J. Rabkin, MD, PhD**

Assistant Professor of Radiology, HMS; Division of Interventional Radiology, BWH

**Elizabeth A. Rafferty, MD**

Instructor in Radiology, HMS; Director, Breast Imaging Division, MGH

**Sughra Raza, MD**

Assistant Professor of Radiology, HMS; Associate Director Breast Imaging, Director, Women's Imaging Program, Director, Clinical Breast MRI, BWH

**Sandra P. Rincon, MD**

Instructor in Radiology, HMS; Assistant Radiologist, Division of Neuroradiology, MGH

**Daniel I. Rosenthal, MD**

Professor of Radiology, HMS, Radiologist, Musculoskeletal Imaging and Intervention, Associate Radiologist-in-Chief, Imaging Operations, MGH

**Frank J. Rybicki III, MD, PhD**

Associate Professor of Radiology, HMS; Director, Cardiac CT and Vascular CT/MRI, Director, Applied Imaging Science Lab, BWH

**Cheryl A. Sadow, MD**

Instructor in Radiology, HMS; Division of Abdominal Imaging and Intervention, BWH

**Pallavi Sagar, MD**

Instructor in Radiology, HMS; Assistant Radiologist, Division of Pediatric Imaging, MGH

**Sanjay Saini, MD**

Professor of Radiology, HMS; Vice Chairman for Finance, MGH Imaging, MGH

**Pamela W. Schaefer, MD**

Associate Professor of Radiology, HMS; Associate Director of Neuroradiology; Director of the Neuroradiology Fellowship, Clinical Director of MRI, MGH

**James A. Scott, MD**

Associate Professor of Radiology, HMS, Associate Radiologist, Nuclear Imaging, Division of Molecular Imaging and PET-CT, MGH

**Lauren M. Sena, MD**

Instructor in Radiology, HMS; Staff Radiologist, Division of Radiology, Children's Hospital Boston

**Amita Sharma, MD**

Instructor in Radiology, HMS; Assistant Radiologist, Division of Thoracic Imaging, MGH

**Michael J. Shortsleeve, MD, FACR**

Assistant Clinical Professor of Radiology, HMS; Chair, Department of Radiology, Mount Auburn Hospital

**Kristen M. Shu Small, MD**

Instructor in Radiology, HMS; Division of Musculoskeletal Imaging, BWH

**Michael L. Steigner, MD**

Instructor in Radiology, HMS; Division of Non-Invasive Cardiovascular Imaging and Intervention, BWH

**Ashraf Thabet, MD**

Instructor in Radiology, HMS; Assistant Radiologist, Abdominal Imaging and Intervention, MGH

**Beatrice Trotman-Dickenson, MD**

Instructor in Radiology, HMS; Division of Thoracic Radiology, BWH

**Kemal Tuncali, MD**

Instructor in Radiology, HSM; Clinical Director, Interventional MRI, Associate Director of AMIGO, Department of Radiology BWH

**Raul N. Uppot, MD**

Assistant Professor of Radiology, HMS; Director, Abdominal Imaging Fellowship; Associate Director, Harvard Medical School Core Radiology Clerkship; Assistant Radiologist, Abdominal Imaging and Intervention, MGH

**Thomas Gregory Walker, MD**

Instructor in Radiology, HMS; Associate Radiologist, Vascular Imaging and Intervention, MGH

**Barbara N. Weissman, MD**

Professor of Radiology, HMS; Vice Chair of Radiology, Director, Radiology Residency Program, BWH

**Tina Young-Poussaint, MD**

Associate Professor of Radiology, HMS; Director, PBTC Neuroimaging Center, Division of Neuroradiology, Children's Hospital Boston

**Lisa M. Zorn, MD**

Instructor in Radiology, HMS; Divisions of Ultrasound and Breast Imaging, BWH



# MGH/BWH Radiology Review 2011

## TUITION FEES

Course #312358

\_\_\_\_\_ Physicians \$1,150 (USD)  
\_\_\_\_\_ Residents\*/Fellows in Training\*/Technologists \$800 (USD)  
\_\_\_\_\_ Allied Health Professionals \$800 (USD)

\* A letter of verification from Department Chair must accompany registration form for a reduced trainee fee.

**Hot Seat Sessions - MUST Pre-Register. Each Session is open to the first 20 residents.**

Please choose one preferred session at each time. If session is not available, you will be assigned an alternate choice.

### Monday 12:00pm

- Thoracic Imaging
- Neuroradiology
- Gastrointestinal

### Tuesday 12:00pm

- Emergency Radiology
- Cardiac Imaging
- Breast Imaging

### Thursday 12:00pm

- Musculoskeletal
- Ultrasound
- Pediatrics

Please print clearly - - ALL FIELDS REQUIRED

Name \_\_\_\_\_  
Last First Middle Initial

Degree \_\_\_\_\_

Street \_\_\_\_\_  
City State Zip Code

Daytime Phone \_\_\_\_\_ Fax Number \_\_\_\_\_

Email Address \_\_\_\_\_

Please check if you wish to be excluded from receiving email notices of future Harvard HMS-DCE programs

Professional School Attended \_\_\_\_\_ Year of Graduation \_\_\_\_\_

Profession \_\_\_\_\_

Principal Specialty \_\_\_\_\_ Board Certified: Yes \_\_\_\_\_ No \_\_\_\_\_

Organization Affiliation \_\_\_\_\_

Check is enclosed

Please make your check payable to Harvard Medical School and mail it with this registration form to:  
Harvard Medical School, Department of Continuing Education, PO Box 825, Boston, MA 02117-0825

**Registrations paid by credit card** may be made online at:

**[www.cme.hms.harvard.edu/courses/mghbwh](http://www.cme.hms.harvard.edu/courses/mghbwh)**

Online registrants - to ensure proper registration, please add the first three characters of the source code found here -  
Source Code: **W E B**