

# BWH/MGH RADIOLOGY REVIEW

## April 1-5, 2012

*Boston Marriott Long Wharf  
Boston, Massachusetts*

*An intensive review of radiology through a series of  
lectures and case review sessions.*

### KEY TOPICS

*Breast, Cardiac, Thoracic, Gastrointestinal, Genitourinary,  
Musculoskeletal, Neuroradiology, Nuclear Medicine,  
Pediatrics, Trauma, Ultrasound*

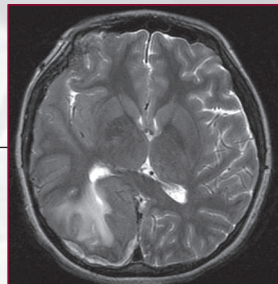
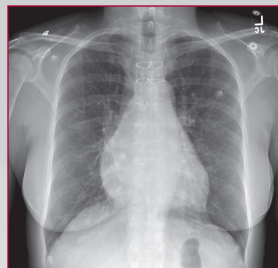
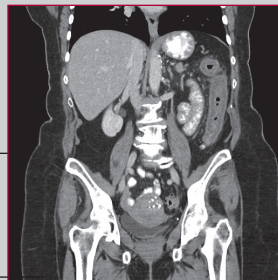
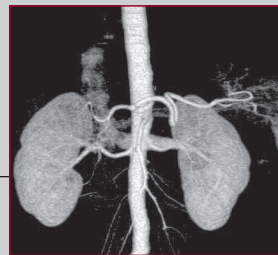
### PROGRAM CO-DIRECTORS

*Barbara N Weissman, MD  
Theresa C McLoud, MD*

### COURSE DESCRIPTION

The breadth and scope of imaging procedures continues to increase. This course provides a review of the imaging findings in various disease states using a wide variety of clinically available imaging modalities. Pitfalls in image interpretation and the optimal methods for imaging various structures and disorders are reviewed. Sessions on dose reduction in CT and treatment of contrast reactions are provided. Focused sessions provide a better understanding of the maintenance of certification process in radiology. Audience participation will be available for case review sessions. Thus, while the educational format will largely be didactic lectures supplemented by question and answer periods, small focused group sessions, judicious use of audience participation and self assessment modules (SAMS) tailored to the course material will be used.

Knowledge gaps that this course addresses include those due to limited experience with newer imaging modalities for diagnosis. This course seeks to review the use and optimization of these newer modalities in disorders that may be encountered in daily practice. In addition, new regulations are now in place for maintenance of certification. Experience with these regulations is limited. Workshops will be provided to help understand and successfully fulfill these requirements.



Harvard Medical School  
Department of Continuing Education



Brigham and Women's Hospital  
Department of Radiology



Massachusetts General Hospital  
Department of Radiology

## OBJECTIVES

Upon completion of this course, participants will be able to:

- Interpret imaging findings in various abnormal conditions
- Select the appropriate use of imaging modalities for evaluation of patients with a variety of disorders
- Explain the MOC process
- Be better prepared to treat contrast reactions
- Identify methods for reducing radiation dose from CT scanning

## WHO SHOULD ATTEND

This course is geared primarily for practicing radiologists and radiologists in training. Radiologic technologists and radiology assistants may also benefit from this course.

## FACULTY

### GUEST

**John W Millstine, MD:** Nuclear and Diagnostic Radiologist, Scottsdale Medical Imaging, Ltd, Scottsdale, AZ

**Joel S Newman, MD:** Clinical Professor of Radiology, Tufts University School of Medicine; Chair, Radiology, New England Baptist Hospital, Boston, MA

**Jan Stauss, MD:** Radiologist, Medical X-Ray Consultants, Eau Claire, WI

### HARVARD MEDICAL SCHOOL

**Suhny Abbara, MD:** Associate Professor of Radiology, HMS; Director, Cardiovascular Imaging Fellowship; Educational Director of Cardiac MR and CT program, Massachusetts General Hospital (MGH)

**Gerald F Abbott, MD:** Senior Lecturer on Radiology, HMS; Associate Radiologist, Division of Thoracic Imaging, MGH

**Essmaeel H Abdel-Dayem, MD:** Instructor in Radiology, HMS; Assistant Radiologist, Division of Abdominal Imaging and Intervention, MGH

**Laura L Avery, MD:** Instructor in Radiology, HMS; Assistant Radiologist, Division of Emergency Imaging, MGH

**Carol B Benson, MD:** Professor of Radiology, HMS; Director, Division of Ultrasound, Co-Director, High Risk Obstetrical Ultrasound, Brigham and Women's Hospital (BWH)

**Michael A Blake, MD:** Assistant Professor of Radiology, HMS; Division of Abdominal Imaging, MGH

**Bradley R Buchbinder, MD:** Instructor in Radiology, HMS; Associate Radiologist, Division of Neuroradiology, MGH

**Jeanne S Chow, MD:** Assistant Professor of Radiology, HMS; Division of Urology and Pediatric Radiology, Children's Hospital Boston

**Garry Choy, MD:** Instructor in Radiology, HMS; Division of Emergency Radiology and Teleradiology, MGH

**Mary E Cunnane, MD:** Instructor in Radiology, HMS; Assistant in Radiology, Massachusetts Eye and Ear Infirmary; Assistant in Radiology, Division of Neuroradiology, MGH

**Sharmila Dorbala, MD, FACC:** Assistant Professor of Radiology, HMS; Director of Nuclear Cardiology; Co-Director of Non-Invasive Cardiovascular Fellowship Training Program, BWH

**Peter M Doubilet, MD, PhD:** Professor of Radiology, HMS; Senior Vice Chair of Radiology, BWH

### HARVARD MEDICAL SCHOOL

**Alejandra Duran-Mendicuti, MD:** Instructor in Radiology, HMS; Division of Emergency Radiology, Department of Radiology, BWH

**Sara M Durfee, MD:** Assistant Professor of Radiology, HMS; Division of Ultrasound, BWH

**Mary C Frates, MD, FOCR:** Associate Professor of Radiology, HMS; Assistant Director, Division of Ultrasound, BWH

**Elisabeth P Frost, MD:** Assistant Professor of Radiology, HMS, Division of Breast Imaging, BWH

**Glenn C Gaviola, MD:** Instructor in Radiology, HMS; Director, Musculoskeletal Imaging and Intervention Fellowship Program; Division of Musculoskeletal Imaging and Intervention, BWH

**Michael S Gee, MD, PhD:** Instructor in Radiology, HMS; Assistant Radiologist, Pediatric Imaging, Division of Abdominal Imaging and Intervention, MGH

**Catherine S Giess, MD:** Assistant Professor of Radiology, HMS; Division of Breast Imaging, BWH

**Ritu R Gill, MD:** Instructor in Radiology, HMS; Division of Thoracic Radiology, BWH

**Alexander S R Guimaraes, MD, PhD:** Assistant Professor of Radiology, HMS; Clinical Director, Martinos Center for Biomedical Imaging, MGH

**Leena M Hamberg, PhD:** Associate Professor of Radiology, HMS; Chief Radiology Physicist, BWH

**Roger Han, MD:** Instructor in Radiology, HMS; Division of Musculoskeletal Imaging and Intervention, BWH

**Howard T Heller, MD:** Instructor in Radiology, HMS; Division of Ultrasound; BWH

**Ambrose J Huang, MD:** Instructor in Radiology, HMS; Assistant Radiologist, Division of Musculoskeletal Imaging and Intervention, MGH

**Andetta R Hunsaker, MD:** Assistant Professor of Radiology, HMS; Director, Division of Thoracic Radiology, BWH

**Delma Y Jarrett, MD:** Instructor in Radiology, HMS; Staff Radiologist, Children's Hospital Boston

**Bharti Khurana, MD:** Instructor in Radiology, HMS; Division of Emergency Radiology, BWH

## HARVARD MEDICAL SCHOOL FACULTY

**Timothy P Killoran, MD:** Instructor in Radiology, HMS; Division of Angiography and Interventional Radiology, BWH

**Daniel B Kopans, MD:** Professor of Radiology, HMS; Senior Radiologist, Breast Imaging Division, Avon Comprehensive Breast Evaluation Center, MGH

**Edward Lee, MD, MPH:** Assistant Professor of Radiology, HMS; Chief, Division of Thoracic Imaging, Departments of Radiology and Medicine, Pulmonary Division, Children's Hospital Boston

**Umar Mahmood, MD, PhD:** Associate Professor of Radiology, HMS; Co-Director, Nuclear Medicine and Molecular Imaging, MGH

**Theresa C McLoud, MD:** Professor of Radiology, HMS, Vice Chair for Education and Thoracic Radiologist, MGH

**Srinivasan Mukundan, Jr, PhD, MD:** Associate Professor of Radiology, HMS; Section Head of Neuroradiology, BWH

**Victorine V Muse, MD:** Instructor in Radiology, HMS; Division of Thoracic Imaging, MGH

**Bethany Niell MD, PhD:** Instructor in Radiology, HMS; Director of Breast Magnetic Resonance Imaging, Avon Comprehensive Breast Center, MGH

**Katherine Nimkin, MD:** Assistant Clinical Professor of Radiology, HMS; Assistant Radiologist, Pediatric Imaging, MGH

**Robert A Novelline, MD, FACR:** Professor of Radiology, HMS; Director of Emergency Radiology, Director of Undergraduate Radiology Education, MGH

**William E Palmer, MD:** Assistant Professor of Radiology, HMS; Director, Musculoskeletal Imaging and Intervention, MGH

**John J Pan, MD:** Instructor in Radiology, HMS; Director, Musculoskeletal and Spine Interventions, BWH

**Hope E Peters, MD:** Instructor in Radiology, HMS; Division of Ultrasound, BWH

**Thomas Ptak, MD, PhD:** Assistant Professor of Radiology, HMS; Assistant Radiologist, Division of Emergency Imaging, MGH

**Sughra Raza, MD:** Assistant Professor of Radiology, HMS; Associate Director Breast Imaging, Director, Women's Imaging Program, Director, Clinical Breast MRI, BWH

**Sandra P Rincon, MD:** Instructor in Radiology, HMS; Assistant Radiologist, Division of Neuroradiology, MGH

**Daniel I Rosenthal, MD:** Professor Radiology, HMS; Vice Chairman, Radiology, MGH

**Frank J Rybicki, MD, PhD, FAHA:** Associate Professor of Radiology, HMS; Director, Cardiac CT and Vascular CT/MRI, Director, Applied Imaging Science Lab, BWH

**Cheryl A Sadow, MD:** Instructor in Radiology, HMS; Division of Abdominal Imaging and Intervention, BWH

**Gloria M Salazar, MD:** Instructor in Radiology, HMS; Division of Vascular Imaging and Intervention, Director of Quality Assurance, Department of Radiology, MGH

**Anthony Samir MD:** Instructor in Radiology, HMS; Associate Director, Ultrasound Imaging Services, Assistant Radiologist, Abdominal Imaging and Intervention, MGH

**Pamela W Schaefer, MD:** Associate Professor of Radiology, HMS; Associate Director of Neuroradiology; Director of the Neuroradiology Fellowship, Clinical Director of MRI, MGH

**Francis J Scholz, MD:** Clinical Instructor in Radiology, HMS; Professor of Radiology, Tufts University School of Medicine, Radiologist, Lahey Clinic

**Nehal Shah, MD:** Instructor in Radiology, HMS; Division of Musculoskeletal Radiology, BWH

**Amita Sharma, MD:** Instructor in Radiology, HMS; Assistant Radiologist, Division of Thoracic Imaging, MGH

**Jo-Anne O Shepard, MD:** Professor of Radiology, HMS; Director of Thoracic Imaging and Intervention, MGH

**Michael J Shortsleeve, MD, FACR:** Assistant Clinical Professor of Radiology, HMS; Chair, Department of Radiology, Mount Auburn Hospital

**Stuart G Silverman, MD, FACR:** Professor of Radiology, HMS; Director, Division of Abdominal Imaging and Intervention, BWH

**Kirstin M Small, MD:** Instructor in Radiology, HMS; Division of Musculoskeletal Imaging and Intervention, BWH

**Stacy E Smith, MD:** Assistant Professor of Radiology, HMS; Section Head and Barbara Weissman Chair, Musculoskeletal Imaging and Intervention, BWH

**Michael L Steigner, MD:** Instructor in Radiology, HMS; Non-Invasive Cardiovascular Imaging, BWH

**S Ted Treves, MD, FACNP:** Professor of Radiology, HMS; Division of Molecular Imaging and Nuclear Medicine, Children's Hospital Boston

**Beatrice Trotman-Dickenson, MD:** Instructor in Radiology, HMS; Division of Thoracic Radiology, BWH

**Kemal Tuncali, MD:** Instructor in Radiology, HMS; Clinical Director, Interventional MRI, Associate Director of AMIGO, Department of Radiology, BWH

**Raul N Uppot, MD:** Assistant Professor of Radiology, HMS; Director, Abdominal Imaging Fellowship; Associate Director, Harvard Medical School Core Radiology Clerkship; Assistant Radiologist, Abdominal Imaging and Intervention, MGH

**T Gregory Walker, MD, FSIR:** Instructor in Radiology, HMS; Associate Director, Fellowship, Division of Vascular Imaging and Intervention, MGH

**Michele M Walters, MD:** Instructor in Radiology, HMS; Director of Education Residency Program Director, Department of Radiology, Children's Hospital Boston

**Mary A Warner, MD:** Instructor in Radiology, HMS; Division of Ultrasound, BWH

**Barbara N Weissman, MD:** Professor of Radiology, HMS; Vice Chair of Radiology, Director, Radiology Residency Program, BWH

**Katherine Zukotynski, MD:** Instructor in Radiology, HMS; Division of Nuclear Medicine, Dana-Farber Cancer Institute, BWH

## SUNDAY, APRIL 1

7:00	Continental Breakfast	
<b>MUSCULOSKELETAL</b>		
7:50	Welcome	Weissman
8:00	Morning Cases: Bone	Han
<b>SAM 1: Leader - Weissman Tumors, Arthritis and FAI</b>		
8:30	Bone Tumors	Rosenthal
9:00	Arthritis	Weissman
9:30	Femoroacetabular Impingement	Palmer
9:50	Questions	
10:00	<b>SAM 1: Tumors, Arthritis, FAI</b>	Weissman
10:30	<b>BREAK</b>	
10:45	MRI Knee Menisci - Pitfalls/Pearls	Huang
11:15	MRI Shoulder- The Rotator Cuff	Shah
11:35	MRI Shoulder - The Labrum	Small
11:55	Selected Sports Lesions about the Hip	Smith
12:20	Questions	
12:25	<b>LUNCH RECESS</b>	
<b>PEDIATRICS</b>		
1:40	Airway/Chest	Lee
2:10	Musculoskeletal Injuries/Sports Injuries in Children	Jarrett Chow
2:40	Pediatric GU	
3:10	<b>BREAK</b>	
3:30	Gastrointestinal	Nimkin
4:00	Pediatric Cases	Walters
4:30	Dose Reduction in CT	Hamberg
5:00	Questions	
5:10	<b>ADJOURN</b>	

## MONDAY, APRIL 2

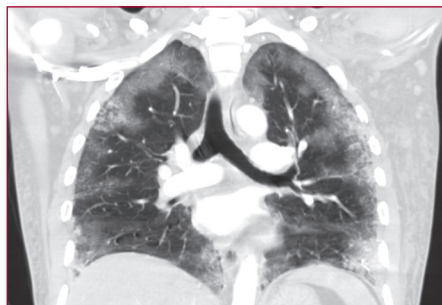
7:00	Continental Breakfast	
<b>GASTROINTESTINAL RADIOLOGY</b>		
7:15	Morning Cases: Gastrointestinal	Abdel-Dayem
<b>SAM 2: Leader - Shortsleeve Barium Examination of the GI Tract</b>		
7:45	Multimodality Imaging of Diseases of the GI Tract: Part I	Scholz
8:15	Multimodality Imaging of Diseases of the GI Tract: Part II	Shortsleeve Guimaraes
8:45	Imaging the Pancreas	
9:05	Questions	
9:10	<b>SAM 2: Barium Examination of the GI Tract</b>	Shortsleeve
9:40	<b>BREAK</b>	
9:55	Hepatic Biliary Imaging	Blake
10:35	Imaging Abdominal Trauma	Avery
11:05	Abdominal Ultrasound	Durfee
11:55	Questions	
12:00	<b>LUNCH RECESS</b>	
<b>BREAST IMAGING</b>		
1:15	Evaluation of Calcifications	Kopans
1:45	Imaging of Breast Masses	Raza
2:30	Breast Ultrasound	Giess
2:50	Breast MRI	Niell
3:15	<b>BREAK</b>	

## MONDAY, APRIL 2 (cont'd)

<b>CARDIAC</b>		
3:30	Acquired Heart Disease	Rybicki
4:15	Imaging of Coronary Artery Disease	Abbara
5:00	Questions and Answers	
5:15	<b>DINNER BREAK</b>	
<b>EVENING MOC: Introduction</b>		
6:30	MOC Basics	McLoud
7:10	Questions	
7:30	What is PQI?	Salazar
8:00	Group Discussion of Projects and Questions	Weissman/ Salazar/ McLoud
8:30	<b>ADJOURN</b>	

## TUESDAY, APRIL 3

7:00	Continental Breakfast	
<b>THORACIC</b>		
7:15	Morning Cases: Chest	Sharma
<b>SAM 3: Leader - McLoud Lung: Interstitial, Airways, and Pleural Disorders</b>		
7:45	Interstitial Lung Disease	McLoud
8:20	Airways	Gill
8:50	The Pleura	Muse
9:20	Questions	
9:25	<b>SAM 3: Lung: Interstitial/Airways/ Pleural Disorders</b>	McLoud
9:55	<b>BREAK</b>	
10:10	Mediastinum	Hunsaker
10:40	Imaging Thoracic Trauma	Novelline
11:10	Pulmonary Infections	Abbott
11:40	Lung Cancer, Nodules	Trotman-Dickenson
12:10	Questions	
12:15	<b>LUNCH RECESS</b>	
<b>OB/GYN ULTRASOUND/MSK ULTRASOUND</b>		
1:30	1st Trimester	Doubilet
2:00	Fetal Anomalies I	Benson
2:30	Fetal Anomalies II	Frates
3:00	<b>BREAK</b>	
3:15	Gynecology - Uterine Ultrasound	Warner
3:45	Ovarian Ultrasound	Peters
4:15	Adult Musculoskeletal Ultrasound	Newman
4:50	Questions	



## TUESDAY, APRIL 3 (cont'd)

5:00	Dinner Recess	
<b>EVENING "HOT SEAT" SESSIONS - FOR RESIDENTS</b>		
<i>(Choose one per session, Advanced sign-up REQUIRED)</i>		
<b>Session I *Only 20 participants per session*</b>		
6:00	MSK	<i>Gaviola</i>
	Neuroradiology	<i>Mukundan</i>
	Chest	<i>McLoud</i>
	Ultrasound	<i>Heller</i>
6:45	<b>BREAK</b>	
<i>(Choose one per session, Advanced sign-in REQUIRED)</i>		
<b>Session II *Only 20 participants per session*</b>		
7:00	Cardiac	<i>Steigner</i>
	Breast	<i>Frost</i>
	ED	<i>Choy</i>
	Gastrointestinal	<i>Uppot</i>
7:45	<b>BREAK</b>	
<i>(Choose one per session, Advanced sign-in REQUIRED)</i>		
<b>Session III *Only 20 participants per session*</b>		
8:00	Pediatrics	<i>Gee</i>
	Angio	<i>Killoran</i>
	Bone	<i>Han</i>
	Nuclear Medicine	<i>Millstine</i>
8:45	Adjourn	
<b>EVENING PROGRAM - The Essentials: What Every Radiologist Must Know</b>		
6:30	MSK Radiography	<i>Weissman</i>
7:00	Chest	<i>Shepard</i>
7:30	Neuroradiology	<i>Ptak</i>
8:00	Abdomen	<i>Choy</i>
8:30	<b>ADJOURN</b>	

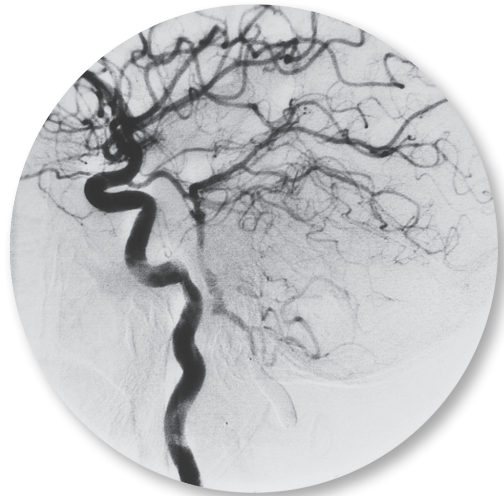
## WEDNESDAY, APRIL 4

7:00	Continental Breakfast	
<b>NUCLEAR MEDICINE</b>		
7:15	Morning Cases: Nuclear Medicine	<i>Millstine</i>
<b>SAM 4: Leader - Millstine</b>		
<b>PET, Bone and Lung Scanning</b>		
8:00	PET and PET- CT	<i>Mahmood</i>
8:40	Lung	<i>Stauss</i>
9:10	Bone	<i>Millstine</i>
9:40	Questions	
9:45	<b>SAM 4: PET, Bone and Lung Scanning</b>	<i>Millstine</i>
10:10	<b>BREAK</b>	
10:25	Genitourinary	<i>Zukotynski</i>
10:55	Thyroid and Therapies	<i>Stauss</i>
11:15	Pediatric Nuclear Medicine	<i>Treves</i>
11:40	Cardiac Imaging	<i>Dorbala</i>
12:15	Questions	
12:20	<b>LUNCH RECESS</b>	
<b>GENITOURINARY RADIOLOGY</b>		
1:35	Ureter, Bladder, Urethra, and Hysterosalpingography	<i>Tuncali</i>
2:20	Genitourinary Ultrasound	<i>Samir</i>
3:05	<b>BREAK</b>	
3:20	Kidneys and Adrenal	<i>Silverman</i>
4:05	CT/MRI of the Reproductive Organs	<i>Sadow</i>
5:00	Questions	
5:10	<b>ADJOURN</b>	

## THURSDAY, APRIL 5

7:00	Continental Breakfast	
<b>TRAUMA</b>		
7:15	Morning Cases: Trauma	<i>Duran-Mendicuti</i>
<b>SAM 5: Leader - Mukundan</b>		
<b>Contrast Reactions</b>		
8:00	Treating Contrast Reactions	<i>Mukundan</i>
9:15	Questions	
9:20	<b>SAM 5: Treating Contrast Reactions</b>	<i>Mukundan</i>
9:45	<b>BREAK</b>	
10:00	Trauma: Facial	<i>Avery</i>
10:30	Trauma: Cardiovascular	<i>Walker</i>
11:00	Trauma: Spine	<i>Khurana</i>
11:30	CNS Trauma and Intracranial Hemorrhage	<i>Ptak</i>
12:00	Questions, Case of the day Winners Announced	<i>Weissman</i>
12:05	<b>LUNCH RECESS</b>	
<b>NEURORADIOLOGY</b>		
1:15	Imaging the Spine	<i>Schaefer</i>
2:00	Vascular Disorders	<i>Rincon</i>
2:35	Tumors and Infections	<i>Buchbinder</i>
3:15	<b>BREAK</b>	
3:30	Eyes, Ears, Nose and Throat, the Essentials	<i>Cunnane</i>
4:30	Vertebroplasty/Kyphoplasty Case Based Approach	<i>Pan</i>
5:00	Questions	
5:10	<b>ADJOURN</b>	

Program changes/substitutions may be made without notice.



## ACCREDITATION

The Harvard Medical School is accredited by the Accreditation Council for Continuing Medical Education to provide continuing medical education for physicians.

The Harvard Medical School designates this live activity for a maximum of 44 AMA PRA Category 1 Credits™. Physicians should claim only the credit commensurate with the extent of their participation in the activity.

We are applying for Self Assessment Credit (SAM) from the American Board of Radiology. As of this printing, we have not yet received approval and credit is pending

## ACGME COMPETENCIES

This course is designed to meet one or more of the following Accreditation Council of Graduate Medical Education competencies:

- \* Patient care
- \* Medical knowledge
- \* Interpersonal and communication skills
- \* Systems based practice

## REGISTRATION INFORMATION

### Tuition Fee:

Physicians	\$1150 (USD)
Residents/Fellows in Training	\$800 (USD)
Allied Health Professionals	\$800 (USD)

Registration by credit card (VISA or MasterCard) can be made at: [www.cme.hms.harvard.edu/courses/bwhmgh](http://www.cme.hms.harvard.edu/courses/bwhmgh). Registration by check (draft on a United States bank), please make payable to Harvard Medical School and mail with registration form to Harvard Medical School-Department of Continuing Education, PO Box 825, Boston, MA 02117-0825. Telephone or fax registration is not accepted. Registration with cash payment is not permitted. Upon receipt of your paid registration an email confirmation from the HMS-DCE office will be sent to you. Be sure to include an email address that you check frequently. Your email address is used for critical information including: registration confirmation, evaluation and certificate.

### “HOT SEAT” SESSIONS - RESIDENTS ONLY - Tuesday, April 3 at 6:00 PM, 7:00 PM, and 8:00 PM

Participants will be asked individually to discuss unknown cases with a time limit for each case. The instructor will then review each case and the differential diagnoses. The sessions are open to the first 80 registrants only (20 participants per session). You must pre-register in order to participate. Please see registration form.

## INQUIRIES

By phone 617-384-8600, Monday-Friday, 10 AM to 4 PM (EST) or by email at: [hms-cme@hms.harvard.edu](mailto:hms-cme@hms.harvard.edu).

## ONLINE INFORMATION

To register or view activity information online, visit: [www.cme.hms.harvard.edu/courses/bwhmgh](http://www.cme.hms.harvard.edu/courses/bwhmgh)  
To ensure proper registration, please add the first three characters of the source code.

## DISCLOSURE POLICY

Harvard Medical School (HMS) adheres to all ACCME Essential Areas, Standards, and Policies. It is HMS's policy that those who have influenced the content of a CME activity (e.g. planners, faculty, authors, reviewers and others) disclose all relevant financial relationships with commercial entities so that HMS may identify and resolve any conflicts of interest prior to the activity. These disclosures will be provided in the activity materials along with disclosure of any commercial support received for the activity. Additionally, faculty members have been instructed to disclose any limitations of data and unlabeled or investigational uses of products during their presentations.

## REFUND POLICY

A handling fee of \$60 is deducted for cancellation. Refund requests must be received by mail or fax one week prior to the course. No refunds will be made thereafter.

## COURSE LOCATION

All sessions will be held at the Boston Marriott Long Wharf, 296 State Street, Boston, MA, (617) 227-0800.

## ACCOMMODATIONS/TRAVEL

A limited number of rooms have been reserved at the Boston Marriott Long Wharf. Reservations for the event will be made by individual attendees directly with Marriott reservations at 1 (800) 228-9290 or (617) 227-0800. Hotel arrangements can also be made online at [www.marriott.com/boslw](http://www.marriott.com/boslw), Enter code *radrada* under the group code box in the special rate section. Please specify that you are enrolled in this activity to receive a reduced room rate of \$269 per night Single/Double. Please do not purchase non-refundable airline ticket(s) until you have received an email from our office confirming your paid registration. For airline reservations contact the HMS Travel Desk toll free 1-877-4-HARVMD (1-877-442-7863) Monday - Friday 9 AM - 8 PM (EST). From outside the U.S., Canada and Virgin Islands, please call 617-559-3764.

## BWH/MGH RADIOLOGY REVIEW - Class # 322358

APRIL 1-5, 2012

TUITION FEES

Physicians	\$1150 (USD)
Residents/Fellows in Training	\$800 (USD)
Allied Health Professionals	\$800 (USD)

HOT SEAT SESSIONS - RESIDENTS ONLY	
<i>MUST Pre-Register, Please choose one preferred session at each time. If session is not available, you will be assigned an alternate choice.</i>	
<b>Tuesday 6:00, Session I</b> <i>Open to first 80 Participants only! (20 per session)</i>	<b>Tuesday 7:00, Session II</b> <i>Open to first 80 Participants only! (20 per session)</i>
<input type="checkbox"/> Musculoskeletal	<input type="checkbox"/> Cardiac
<input type="checkbox"/> Neuroradiology	<input type="checkbox"/> Breast
<input type="checkbox"/> Chest	<input type="checkbox"/> ED
<input type="checkbox"/> Ultrasound	<input type="checkbox"/> Gastrointestinal
<b>Tuesday 8:00, Session III</b> <i>Open to first 80 Participants only! (20 per session)</i>	
<input type="checkbox"/> Pediatrics	
<input type="checkbox"/> Angio	
<input type="checkbox"/> Bone	
<input type="checkbox"/> Nuclear Medicine	

Print Name Clearly – All Fields Required

Full Name \_\_\_\_\_

Mailing Address \_\_\_\_\_

City \_\_\_\_\_ State \_\_\_\_\_ Zip \_\_\_\_\_

Daytime Phone (\_\_\_\_\_) \_\_\_\_\_ Fax Number (\_\_\_\_\_) \_\_\_\_\_

PLEASE NOTE: Your email address is used for critical information about the course including: registration confirmation, course evaluation and certificate. Please be sure to include an email address you check daily or frequently.

Email Address \_\_\_\_\_

Please check if you wish to be excluded from receiving email notices of future Harvard Medical School - Department of Continuing Education programs

Profession \_\_\_\_\_ Degree \_\_\_\_\_

Primary Specialty (Physicians Only) \_\_\_\_\_ Board Certified: Yes  No

Professional School Attended (Physicians Only)  Harvard Medical School  U.S. Medical School  International

Year of Graduation \_\_\_\_\_

Online Registrants - add the first three characters of the source code found here: Source Code: XZZZ

In an effort to "Go Green", each participant will receive an electronic syllabus only. We will no longer be providing paper versions.

[www.cme.hms.harvard.edu/courses/bwhmgh](http://www.cme.hms.harvard.edu/courses/bwhmgh)