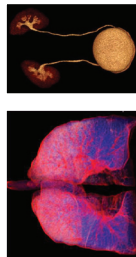




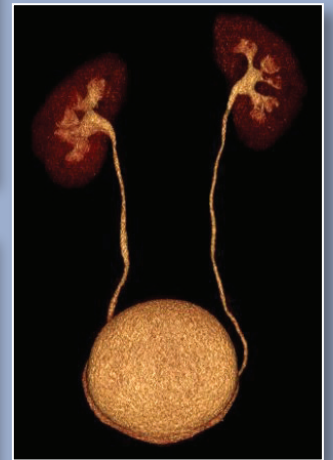
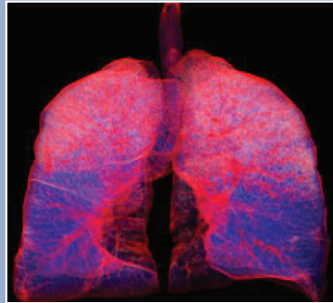
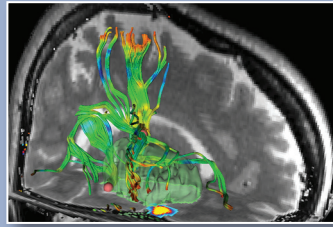
Harvard Medical School
 Department of Continuing Education
 PO Box 825
 Boston, MA 02117-0825
www.cme.hms.harvard.edu



MRI/CT Update
 October 22-26, 2012
 Monday - Friday

www.radcme.harvard.edu

MRI / CT UPDATE



October 22-26, 2012
 Monday-Friday

The Fairmont Copley Plaza
 Boston, Massachusetts

COURSE DIRECTORS

Hiroto Hatabu, MD, PhD
Srini Mukundan, PhD, MD



Harvard Medical School
 Department of Continuing Education



Brigham and Women's Hospital
 Department of Radiology

COURSE DESCRIPTION

The burgeoning field of Radiology, in particular CT and MRI, include new techniques and new applications that make it difficult for the practicing radiologist to stay current and up to date on when and why these techniques should be used and how to interpret them. In response to this increasing need, this is the 35th offering of our annual, postgraduate course that emphasizes clinical MRI and CT of the entire body. It is designed for practitioners using MRI and multi-detector CT, and those who wish to learn the latest applications from experts. The basic format of the course is didactic lecture style supplemented by question and answer periods. The first two and a half days of the course (Monday, Tuesday, and Wednesday morning) cover body imaging, including, chest, abdomen, pelvis, cardiovascular, breast and musculoskeletal imaging; second two days (Wednesday afternoon, Thursday and Friday morning) cover Neuro Imaging. The Neuro Imaging curriculum spans the complete spectrum from spine, to brain, to head and neck/ ENT. The Neuro Imaging curriculum is directed toward the practicing radiologist, with emphasis on the translation of advanced techniques and technologies to the clinical domain. The educational format will largely be didactic lectures supplemented by question and answer periods.

OBJECTIVES

Upon completion of this activity, participants will be able to:

- Demonstrate knowledge of the latest MRI and CT techniques for both body and neuroradiologic applications.
- Appropriately utilize the latest MRI and CT techniques for both body and neuroradiologic applications, many of which will be directly applicable in the clinic.
- Manage an MRI or CT facility.
- Demonstrate knowledge of how experienced radiologists perform and interpret these examinations.

WHO SHOULD ATTEND

This course is geared primarily for physicians who are practicing radiology or have an interest in the radiological sciences as well as Medical Physicists interested in CT or MR.

COURSE DIRECTORS

Hiroto Hatabu, MD, PhD: Associate Professor of Radiology, Harvard Medical School; Clinical Director, MRI Program, Medical Director, Center for Pulmonary Functional Imaging, Director, MRI Clinical Fellowship, Department of Radiology, Brigham and Women's Hospital

Srinivasan Mukundan, Jr, PhD, MD: Associate Professor of Radiology, Harvard Medical School; Section Head of Neuroradiology, Brigham and Women's Hospital

GUEST FACULTY

Warren B Gefter, MD: Professor of Radiology, Chief, Thoracic Imaging Section, Associate Chair, Department of Radiology, Hospital of the University of Pennsylvania, Philadelphia, PA

Jorge Soto, MD: Professor of Radiology, Vice-Chairman of Radiology, Boston University Medical Center, Boston, MA

Megan K Strother, MD: Assistant professor of Radiology and Radiological Sciences and Neurological Surgery, Vanderbilt University Medical Center, Nashville, TN

Sean Peter Symons, BSc, MPH, MD, FRCPC, DABR: Associate Professor, University of Toronto, Departments of Medical Imaging and Otolaryngology - Head and Neck Surgery, Sunnybrook Health Sciences Centre, Toronto, Ontario, Canada

HARVARD MEDICAL SCHOOL FACULTY

Brian M Alexander, MD: Instructor in Radiation Oncology; Radiation Oncology Section, Brigham and Women's Hospital

Michael A Blake, MD: Assistant Professor of Radiology; Division of Abdominal Imaging, Massachusetts General Hospital

Charles H Cho, MD, MBA: Instructor in Radiology; Neuroradiology Section, Brigham and Women's Hospital

Mary E Cunnane, MD: Instructor in Radiology; Massachusetts Eye and Ear Infirmary, Division of Neuroradiology, Massachusetts General Hospital

Hugh D Curtin, MD: Professor of Radiology; Chief of Radiology, Massachusetts Eye and Ear Infirmary

Ian F Dunn, MD: Instructor in Surgery; Department of Neurosurgery, Brigham and Women's Hospital

Alejandra Duran-Mendicuti, MD: Instructor in Radiology, Division of Emergency Radiology, Brigham and Women's Hospital

Glenn C Gaviola, MD: Instructor in Radiology; Division of Musculoskeletal Imaging and Intervention, Brigham and Women's Hospital

Victor H Gerbaudo, PhD: Lecturer on Radiology; Director, Nuclear Medicine and Molecular Imaging Program; Senior Administrative Director, Noninvasive Cardiovascular Imaging and Cardiac Stress Programs, Brigham and Women's Hospital

Roger Han, MD: Instructor in Radiology; Division of Musculoskeletal Imaging, Brigham and Women's Hospital

Raymond Y Huang, MD, PhD: Instructor in Radiology, Brigham and Women's Hospital

Andetta R Hunsaker, MD: Assistant Professor of Radiology; Director, Division of Thoracic Radiology, Brigham and Women's Hospital

Francine L Jacobson, MD: Assistant Professor of Radiology; Division of Thoracic Radiology, Brigham and Women's Hospital

Bharti Khurana, MD: Instructor in Radiology; Division of Emergency Radiology, Brigham and Women's Hospital

MONDAY, OCTOBER 22

Thomas C Lee, MD: Instructor in Radiology; Neuroradiology Section, Brigham and Women's Hospital

Theresa C McLoud, MD: Professor of Radiology; Vice Chair for Education, Department of Radiology; Division of Thoracic Imaging and Intervention, Massachusetts General Hospital

Koenraad J Morteale, MD: Associate Professor of Radiology; Director, Division of Clinical MRI, Department of Radiology, Beth Israel Deaconess Medical Center

Mizuki Nishino, MD: Assistant Professor of Radiology; Brigham and Women's Hospital and Dana-Farber Cancer Institute

John J Pan, MD: Instructor in Radiology; Division of Musculoskeletal Radiology, Brigham and Women's Hospital

Larry P Panych, PhD: Associate Professor of Radiology; Brigham and Women's Hospital

Sughra Raza, MD: Assistant Professor of Radiology; Associate Director Breast Imaging, Director, Women's Imaging Program, Director, Clinical Breast MRI, Brigham and Women's Hospital

Dushyant Sahani, MD: Associate Professor of Radiology; Director of CT, Massachusetts General Hospital

Nehal Shah, MD: Instructor in Radiology; Division of Musculoskeletal Radiology, Brigham and Women's Hospital

Stuart G Silverman, MD, FACR: Professor of Radiology; Director, Division of Abdominal Imaging and Intervention, Brigham and Women's Hospital

Kirstin M Small, MD: Instructor in Radiology; Division of Musculoskeletal Imaging, Brigham and Women's Hospital

Stacy E Smith, MD: Assistant Professor of Radiology; Section Head and Barbara Weissman Chair, Musculoskeletal Imaging, Brigham and Women's Hospital

Aaron Sodickson, MD, PhD: Assistant Professor of Radiology; Director of Emergency Radiology, Brigham and Women's Hospital

Michael H Stella, MD: Instructor in Radiology; Director, Emergency Radiology Quality Assurance, Brigham and Women's Hospital

Clare M C Tempany, MD: Professor of Radiology; Ferenc Jolesz, Chair of Radiology Research, Vice Chair, Radiology Research, Director, Clinical Focused Ultrasound, Department of Radiology, Brigham and Women's Hospital

Beatrice Trotman-Dickenson, MD: Assistant Professor of Radiology; Division of Thoracic Radiology, Brigham and Women's Hospital

Barbara N Weissman, MD: Professor of Radiology; Vice Chair of Radiology, Radiology Residency Program Director, Brigham and Women's Hospital

Geoffrey S Young, MD: Assistant Professor of Radiology; Neuroradiology Section, Brigham and Women's Hospital

Amir A Zamani, MD: Associate Professor of Radiology; Neuroradiology Section, Brigham and Women's Hospital

BODY IMAGING

7:55 Welcome and Introduction *Hiroto Hatabu, MD, PhD*
Moderator: *Aaron Sodickson, MD, PhD*

EMERGENCY RADIOLOGY

8:00 Radiation Dose Reduction in ER *Aaron Sodickson, MD, PhD*
8:30 Abdominal Trauma *Michael Stella, MD*
9:00 Chest Trauma *Sandra Duran-Mendicutti, MD*
9:30 MRI of Acute Hip Pain *Bharti Khurana, MD*
10:00 Questions and Answers
10:10 Coffee Break

ABDOMEN I

10:30 Use of MRI in Abdominal Emergencies *Jorge Soto, MD*
11:00 CT/MRI of Cystic Pancreatic Masses *Koenraad J Morteale, MD*
11:30 Current Concepts in Imaging of Acute Pancreatitis *Jorge Soto, MD*
12:00 Questions and Answers
12:15 Lunch - On Your Own

ABDOMEN/PELVIS

1:30 CT/MRI of Focal Liver Lesions: Detection Characterization and Surgical Planning *Dushyant Sahani, MD*
2:00 Use of CT angiography in Acute Lower Intestinal Bleeding *Jorge Soto, MD*
2:30 MRI of the Prostate Gland *Clare M C Tempany, MD*
3:00 Questions and Answers
3:10 Coffee Break

ABDOMEN II

3:30 Management of the Incidental Renal Mass *Stuart G Silverman, MD, FACR*
4:00 CT/MRI of the Adrenal Gland *Michael A Blake, MD*
4:30 CT Urography *Stuart G Silverman, MD, FACR*
5:10 Questions and Answers
5:15 Adjourn

TUESDAY, OCTOBER 23

THORACIC IMAGING (INCLUDING BREAST AND HEART)

7:00 Continental Breakfast
7:10 Morning Announcements *Hiroto Hatabu, MD, PhD*
7:15 Morning Cases - Thoracic *Hiroto Hatabu, MD, PhD*
8:00 MR Physics Review *Larry Panych, PhD*
8:30 Breast MRI *Sughra Raza, MD*
9:00 Thoracic MRI: Promises, Problems, and Prospects *Warren B Gefter, MD*
9:30 COPD Screening and Staging *Francine L Jacobson, MD*
10:00 Questions and Answers
10:10 Coffee Break
10:30 Pulmonary Embolism *Andetta Hunsaker, MD*
11:00 From Lesion Dimensions to Molecular Pathways: Monitoring Tumor Response to Therapy *Victor H Gerbaudo, PhD*

- 12:00 Questions and Answers
 12:15 Lunch - On Your Own
 1:30 HRCT in Diffuse Lung Disease:
 From the Brain to the Computer *Warren B Geftter, MD*
 2:00 Smoking Related Lung Disease *Hiroto Hatabu, MD, PhD*
 2:30 Early Life Threatening Complications
 following Pulmonary
 Resection *Beatrice Trotman-Dickenson, MBBS*
 3:00 Questions and Answers
 3:10 Coffee Break
 3:30 Troublesome GGO: Bringing Clarity
 to these Hazy Lesions *Warren B Geftter, MD*
 4:00 Response Evaluation of Lung Cancer with Molecular
 Targeted Therapy *Mizuki Nishino, MD*
 4:30 Lung Cancer Screening:
 An Update *Theresa C McLoud, MD*
 5:00 Questions and Answers
 5:10 Adjourn

WEDNESDAY, OCTOBER 24

- 7:00 Continental Breakfast
MUSCULOSKELETAL IMAGING
 7:10 Morning Announcements
Srinivasan Mukundan, Jr, PhD, MD
Moderator: Barbara N Weissman, MD
 7:15 Morning Cases - Bone *John Pan, MD*
 8:00 Foot and Ankle *Stacy E Smith, MD*
 8:45 Shoulder *Kirstin M Small, MD*
 9:30 Coffee Break
 9:45 MRI Technical Pearls in MSK *Nehal Shah, MD*
 10:15 Elbow *Stacy E Smith, MD*
 10:45 CT/MRI of Arthritis *Barbara N Weissman, MD*
 11:15 Knee *Glenn C Gaviola, MD*
 12:00 Questions and Answers
 12:15 Lunch - On Your Own
 1:00 *Registration for Neuro Imaging Portion Only*
SPINE IMAGING
Moderator: Srinivasan Mukundan, Jr, PhD, MD
 1:30 Spine Overview *Thomas C Lee, MD*
 2:00 Spine Intervention - Novel Approaches
Roger Han, MD and Thomas C Lee, MD
 2:45 Non-Tumoral Spine *Charles Cho, MD*
 3:15 Coffee Break
 3:30 Surgical Correlation: Radiation Therapy of the
 Spine, How Imaging Helps Me *Brian Alexander, MD*
 4:15 Tumoral Spine *Glenn C Gaviola, MD*
 5:00 Questions and Answers
 5:10 Adjourn

THURSDAY, OCTOBER 25

- 7:00 Continental Breakfast
NEURORADIOLOGY GAMUTS
 7:10 Morning Announcements
Srinivasan Mukundan, Jr, PhD, MD
Moderator: Srinivasan Mukundan, Jr, PhD, MD
 7:15 Morning Cases - Neuroradiology *Raymond Huang, MD*
 8:00 White Matter Diseases *Amir A Zamani, MD*
 8:45 Imaging of Head Trauma *Sean Symons, MD*
 9:30 Coffee Break
 9:45 Brain Tumor Overview *Geoffrey Young, MD*
 10:30 Sella Anatomy and Pathology
Srinivasan Mukundan, Jr, PhD, MD
 11:15 Clinical Correlation: Intracranial Tumor Resection:
 How Imaging Helps *Ian Dunn, MD*
 12:00 Questions and Answers
 12:15 Lunch - On Your Own
NEUROVASCULAR IMAGING
Moderator: Geoffrey Young, MD
 1:30 Carotid Imaging by CT and MRI *Sean Symons, MD*
 2:00 Acute Stroke Imaging by CT *Megan Strother, MD*
 2:45 Pitfalls with CT Perfusion Imaging
 in Neuroradiology *Megan Strother, MD*
 3:15 Coffee Break
 3:30 MDCT, ASL, and Hypercapnic BOLD fMRI for Evaluating
 Perfusion in patients with
 Intracranial Stenosis *Megan Strother, MD*
 4:15 Neurons and Nephrons: Gadolinium Based Contrast
 Agents 2012 *Srinivasan Mukundan, Jr, PhD, MD*
 5:00 Adjourn

FRIDAY, OCTOBER 26

- 7:00 Continental Breakfast
ENT IMAGING
 7:10 Morning Announcements
Srinivasan Mukundan, Jr, PhD, MD
Moderator: Thomas Lee, MD
 7:15 Morning Cases - Neuro *Mary Beth Cunnane, MD*
 8:00 Landmarks in Head and Neck Cancer *Hugh D Curtin, MD*
 8:45 Temporal Bone Anatomy *Sean Symons, MD*
 9:30 Coffee Break
 9:45 Parapharyngeal and Masticator
 Spaces *Hugh D Curtin, MD*
 10:30 Temporal Bone Pathology *Sean Symons, MD*
 11:15 Larynx *Hugh D Curtin, MD*
 11:45 Questions and Answers
 12:00 Adjourn

Please note: Program changes/substitutions may be made without notice.

ACCREDITATION

The Harvard Medical School is accredited by the Accreditation Council for Continuing Medical Education to provide continuing medical education for physicians.

The Harvard Medical School designates this live activity for a maximum of 36 AMA PRA Category 1 Credits™. Physicians should claim only the credit commensurate with the extent of their participation in the activity.

Body Imaging: A maximum of 20 AMA PRA Category 1 Credits™

Neuro Imaging: A maximum of 16 AMA PRA Category 1 Credits™

ACGME COMPETENCIES

This course is designed to meet one or more of the following Accreditation Council of Graduate Medical Education competencies:

- * Patient care
- * Medical knowledge
- * Practice-based learning and improvement

REGISTRATION INFORMATION

Tuition Fee:

Full Course	
Physicians	\$895 (USD)
Residents/Fellows in Training	
Allied Health Professionals:	\$550 (USD)
Body Imaging	
Physicians	\$695 (USD)
Residents/Fellows in Training	
Allied Health Professionals:	\$450 (USD)
Neuro Imaging	
Physicians	\$675 (USD)
Residents/Fellows in Training	
Allied Health Professionals:	\$425 (USD)

Registration by credit card (VISA or MasterCard) can be made at: www.cme.hms.harvard.edu/courses/mrict. Registration by check (draft on a United States bank), please make payable to Harvard Medical School and mail with registration form to Harvard Medical School-Department of Continuing Education, PO Box 417476, Boston, MA 02241-7476. Telephone or fax registration is not accepted. Registration with cash payment is not permitted. Upon receipt of your paid registration an email confirmation from the HMS-DCE office will be sent to you. Be sure to include an email address that you check frequently. Your email address is used for critical information including: registration confirmation, evaluation and certificate.

INQUIRIES

By phone 617-384-8600, Monday-Friday, 10 AM to 4 PM (EST) or by email at: hms-cme@hms.harvard.edu.

ONLINE INFORMATION

To register or view activity information online, visit: www.cme.hms.harvard.edu/courses/mrict. To ensure proper registration, please add the first three characters of the source code.

DISCLOSURE POLICY

Harvard Medical School (HMS) adheres to all ACCME Essential Areas, Standards, and Policies. It is HMS's policy that those who have influenced the content of a CME activity (e.g. planners, faculty, authors, reviewers and others) disclose all relevant financial relationships with commercial entities so that HMS may identify and resolve any conflicts of interest prior to the activity. These disclosures will be provided in the activity materials along with disclosure of any commercial support received for the activity. Additionally, faculty members have been instructed to disclose any limitations of data and unlabeled or investigational uses of products during their presentations.

REFUND POLICY

A handling fee of \$60 is deducted for cancellation. Refund requests must be received by postal mail, email or fax one week prior this activity. No refunds will be made thereafter.

COURSE LOCATION

All sessions will be held at the Fairmont Copley Plaza, 138 St. James Avenue, Boston, MA 02116 (617-267-5300).

ACCOMMODATIONS/TRAVEL

A limited number of rooms have been reserved at the Fairmont Copley Plaza, (800) 441-1414 or (617) 267-5300 until September 30, 2012. Please specify that you are enrolled in this activity to receive a reduced room rate of \$319 and \$349 Deluxe room per night Single/Double. You may also reserve your hotel reservations online via the dedicated booking website:

<https://resweb.passkey.com/go/hmsmrict>. Please do not purchase non-refundable airline ticket(s) until you have received an email from our office confirming your paid registration. For airline reservations contact the HMS Travel Desk toll free 1-877-4-HARVMD (1-877-442-7863) Monday - Friday 9 AM - 8 PM (EST). From outside the US, Canada and Virgin Islands, please call 617-559-3764.

MRI/CT UPDATE

COURSE # 321050

October 22-26, 2012

Tuition Fee

<input type="checkbox"/> Full Course	
Physicians	\$895 (USD)
Residents/Fellows in Training	
Allied Health Professionals:	\$550 (USD)
<input type="checkbox"/> Body Imaging	
Physicians	\$695 (USD)
Residents/Fellows in Training	
Allied Health Professionals:	\$450 (USD)
<input type="checkbox"/> Neuro Imaging	
Physicians	\$675 (USD)
Residents/Fellows in Training	
Allied Health Professionals:	\$425 (USD)

Print Name Clearly – All Fields Required

Full Name _____

Mailing Address _____

Daytime Phone (____) _____ Fax Number (____) _____

PLEASE NOTE: Your email address is used for critical information about the course including; registration confirmation, course evaluation and certificate. Please be sure to include an email address you check daily or frequently.

Email Address _____

Please check if you wish to be excluded from receiving email notices of future Harvard Medical School - Department of Continuing Education programs

Profession _____ Degree _____

Primary Specialty (Physicians Only) _____

Board Certified: Yes No

Professional School Attended (Physicians Only)

Harvard Medical School U.S. Medical School International

Year of Graduation _____

Online Registrants - add the first three characters of the source code found here:

Source Code: XZZZ