

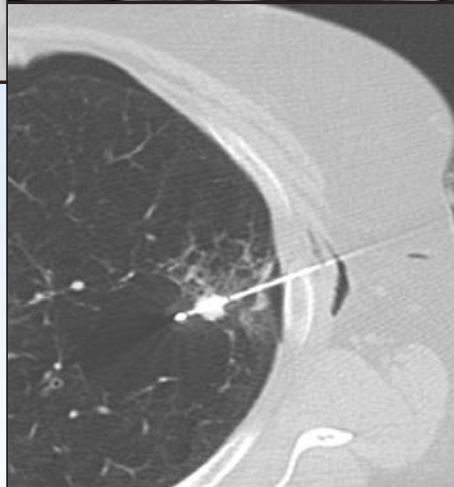
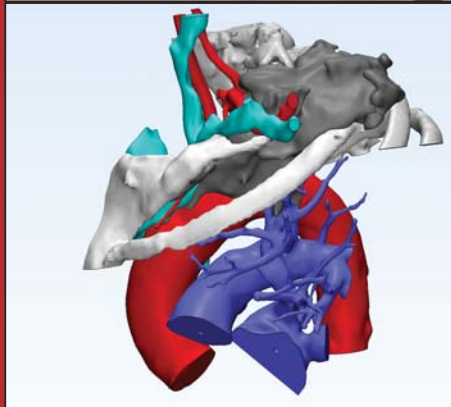
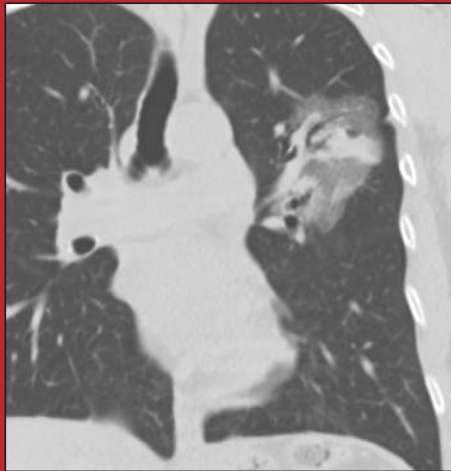


BRIGHAM AND  
WOMEN'S HOSPITAL



MASSACHUSETTS  
GENERAL HOSPITAL

# Chest Imaging



October 17-19, 2016

*Boston Marriott Long Wharf*

*Boston, Massachusetts*

---

*Course Directors:*

*Andetta R. Hunsaker, MD and Jo-Anne O. Shepard, MD*



HARVARD  
MEDICAL SCHOOL

## REGISTRATION INFORMATION

Physicians:	\$825
Resident/Fellow/Student:	\$600
Allied Health Professionals	\$600
*Processing \$5 (non-refundable service fee)	
*All fees shown in USD	

Registrations for Harvard Medical School CME programs are made via our secure online registration system. To register for this course, please visit <https://www.hmscmeregistration.org/chestimaging2016> you will have the choice of paying by check or credit card (Visa, MasterCard, or American Express). If you are paying by check, the online registration system will provide you with instructions and a printable form for remitting your course fees by check. Postal, telephone, fax, and cash-payment registrations are not accepted. Upon receipt of your paid registration, an email confirmation from the HMS DCE office will be sent to you. Be sure to include an email address that you check frequently. Your email address is used for critical information, including registration confirmation, evaluation, and certificate.

## INQUIRIES

By phone (617-384-8600), Mon - Fri, 9 am to 5 pm (ET) or by email at: [ceprograms@hms.harvard.edu](mailto:ceprograms@hms.harvard.edu).

## REFUND POLICY

Refunds, less an administrative fee of \$75, will be issued for all cancellations received two weeks prior to the start of the course. Refund requests must be received by postal mail or email. No refund will be issued should cancellation occur less than two weeks prior. "No shows" are subject to the full course fee and no refunds will be issued once the conference has started.

## DISCLOSURE POLICY

Harvard Medical School (HMS) adheres to all ACCME Essential Areas, Standards, and Policies. It is HMS's policy that those who have influenced the content of a CME activity (e.g. planners, faculty, authors, reviewers and others) disclose all relevant financial relationships with commercial entities so that HMS may identify and resolve any conflicts of interest prior to the activity. These disclosures will be provided in the activity materials along with disclosure of any commercial support received for the activity. Additionally, faculty members have been instructed to disclose any limitations of data and unlabeled or investigational uses of products during their presentations.

## DISCLAIMER

CME activities sponsored by Harvard Medical School are offered solely for educational purposes and do not constitute any form of certification of competency. Practitioners should always consult additional sources of information and exercise their best professional judgment before making clinical decisions of any kind.

## COURSE DIRECTORS

---

**Andetta R. Hunsaker, MD:** Associate Professor of Radiology, Harvard Medical School; Director, Division of Thoracic Radiology, Brigham and Women's Hospital

**Jo-Anne O. Shepard, MD:** Professor of Radiology, Harvard Medical School; Director of Thoracic Imaging and Intervention, Massachusetts General Hospital

## GUEST FACULTY

---

**Denise R. Aberle, MD:** Professor of Radiology, David Geffen School of Medicine; Professor of Bioengineering in the Henry Samueli School of Engineering and Applied Sciences; Vice Chair of Research, Department of Radiological Science, UCLA, Los Angeles, CA

**Jeffrey R. Galvin, MD:** Professor of Radiology and Pulmonary Medicine, University of Maryland, Baltimore, MD; Chief, Thoracic Imaging, American Institute for Radiologic Pathology, Silver Spring, MD

**Mark M. Hammer, MD:** Guest Lecturer, University of Pennsylvania, Pennsylvania, PA

## HARVARD MEDICAL SCHOOL FACULTY

---

**Gerald F. Abbott, MD:** Associate Professor of Radiology, HMS; Radiologist, Division of Thoracic Imaging and Intervention, Massachusetts General Hospital (MGH)

**Jeanne B. Ackman, MD:** Assistant Professor of Radiology, HMS; Director of Thoracic MRI, Radiologist, Division of Thoracic Imaging and Intervention, MGH

**Maria F. Barile, MD:** Instructor in Radiology, HMS; Division of Thoracic Radiology, Brigham and Women's Hospital (BWH)

**Raphael Bueno, MD:** Professor of Surgery, HMS; Chief, Division of Thoracic Surgery, BWH

**Aileen B. Chen, MD:** Assistant Professor of Radiation Oncology, HMS; Division of Thoracic Oncology, Dana-Farber Cancer Institute

**Subba R. Digumarthy, MD:** Assistant Professor of Radiology, HMS; Radiologist, Division of Thoracic Imaging and Intervention, MGH

**Ruth M. Dunne, MD:** Instructor in Radiology, Harvard Medical School; Division of Thoracic Radiology, Brigham and Women's Hospital

**Florian J. Fintelmann, MD, FRCPC:** Instructor in Radiology, HMS; Assistant Radiologist, Division of Thoracic Imaging and Intervention, MGH

**Efren J. Flores, MD:** Instructor in Radiology, HMS; Assistant Radiologist, Division of Thoracic Imaging and Intervention, MGH

**Ritu R. Gill, MD:** Assistant Professor of Radiology, HMS; Department of Radiology, BWH

**Matthew D. Gilman, MD:** Assistant Professor of Radiology, HMS; Associate Director, Radiologist, Division of Thoracic Imaging and Intervention, Associate Director, Cardiothoracic Imaging Fellowship, MGH

**Gary M. Hunninghake, MD, MPH:** Assistant Professor of Medicine, HMS; Director of the Sarcoidosis and Granulomatous Lung Disease Service, BWH

**Hiroto Hatabu, MD, PhD:** Professor of Radiology, HMS; Clinical Director MRI Program, Medical Director, Center for Pulmonary Functional Imaging, Department of Radiology, BWH

**Francine L. Jacobson, MD, MPH:** Assistant Professor of Radiology, HMS; Division of Thoracic Radiology, BWH, Director of Lung Cancer Screening, BWHC

**Bruce E. Johnson, MD:** Professor of Medicine, HMS; Chief Clinical Research Officer, Dana-Farber Cancer Institute

**Manudeep K. Kalra, MD:** Associate Professor of Radiology, HMS; Radiologist, Division of Thoracic Imaging and Intervention, MGH

**Rachna Madan, MD:** Instructor in Radiology, HMS; Division of Thoracic Imaging and Intervention, BWH

**Shaunagh McDermott, MD:** Instructor in Radiology, HMS; Radiologist, Division of Thoracic Imaging and Intervention, MGH

**Theresa C. McLoud, MD:** Professor of Radiology, HMS; Vice Chair for Education, Department of Radiology, Division of Thoracic Imaging and Intervention, MGH

**Milena Petranovic, MD:** Instructor in Radiology, HMS; Assistant Radiologist, Division of Thoracic Imaging and Intervention, MGH

**Melissa C. Price, MD:** Clinical Fellow in Radiology, HMS; Clinical Assistant, Division of Thoracic Imaging and Intervention, MGH

**Amita Sharma, MD:** Assistant Professor of Radiology, HMS; Radiologist, Division of Thoracic Imaging and Intervention, MGH

**Lynette M. Sholl, MD:** Assistant Professor of Pathology, HMS, Division of Pathology; Department of Radiology, BWH

---

## MONDAY, OCTOBER 17

- 7:00 Registration / Continental Breakfast  
7:50 Welcome and Announcements *Andetta Hunsaker, MD*  
Moderator: **Andetta Hunsaker, MD**  
8:00 Radiologic Staging of NSCLC Lung Cancer *Gerald Abbott, MD*  
8:30 Imaging of Lung Adenocarcinoma *Jeffrey Galvin, MD*  
8:50 Cystic Lung Cancer *Jo-Anne Shepard, MD*  
9:10 Assessment of Treatment Response  
in Lung Cancer *Subba Digumarthy, MD*  
9:30 Genomics and NSCLC *Bruce Johnson, MD*  
10:00 **BREAK**  
10:15 Surgical Staging and Management  
of Lung Cancer *Raphael Bueno, MD*  
10:45 NSCLC Management from the Radiation  
Oncologists Perspective *Aileen Chen, MD*  
11:15 Radiologists Role in the Management  
of Lung Cancer *Ritu Gill, MD*

Moderator: **Jo-Anne Shepard, MD**

- 11:45 Tumor Board Cases *Raphael Bueno, MD, Jeffrey Galvin, MD,  
Aileen Chen, MD, Ritu Gill, MD, Bruce Johnson, MD*  
12:30 **LUNCH RECESS**

### Lung Cancer Screening and Other Lung Neoplasms

Moderator: **Francine Jacobson, MD, MPH**

- 1:30 Lung Cancer Screening Overview *Denise Aberle, MD*  
1:50 Creating a Lung Cancer  
Screening Program *Francine Jacobson, MD, MPH*  
2:10 Demystifying Lung Rads *Denise Aberle, MD*  
2:30 Beneath the Surface of the Data:  
What else have we Learned? *Denise Aberle, MD*  
2:50 Lung Cancer Screening: Opportunities and  
Challenges in National implementation *Denise Aberle, MD*  
3:10 **BREAK**  
3:25 Lung Cancer Screening:  
Societal Perspectives *Theresa McCloud, MD*  
3:45 Lung Cancer Screening:  
Results of International Trials *Denise Aberle, MD*  
4:05 Incidental findings on Screening *Jo-Anne Shepard, MD*  
4:25 Evaluation of Incidental Pulmonary Nodules  
Saving Lives or Wasting Time *Denise Aberle, MD*

Moderator: **Theresa McCloud, MD**

- 4:45 Lung Cancer Screening Panel Discussion:  
Risk Management Issues in Lung Cancer Screening  
*Denise Aberle, MD, Francine Jacobson, MD, MPH  
Jo-Anne Shepard, MD*  
5:30 **ADJOURN**

---

## TUESDAY, OCTOBER 18

- 7:00 Continental Breakfast

### Interstitial Lung Disease A Multidisciplinary Approach

Moderator: **Amita Sharma, MD**

- 8:00 *HRCT Anatomy* *Amita Sharma, MD*  
8:20 *HRCT Reticular Pattern* *Jeffrey Galvin, MD*  
8:40 *HRCT Nodular Pattern* *Jeffrey Galvin, MD*  
9:00 *HRCT in Ground Glass Pattern* *Jeffrey Galvin, MD*  
9:20 *Cystic Pattern on HRCT* *Andetta Hunsaker, MD*

---

## TUESDAY, OCTOBER 18 (CON'T)

9:40	<i>Idiopathic Interstitial Pneumonias: A Pathologist's Perspective</i>	<i>Lynette Sholl, MD</i>
10:00	BREAK	
10:15	<i>Update on Classification Idiopathic Interstitial Pneumonias</i>	<i>Jeffrey Galvin, MD</i>
10:45	<i>Pulmonologist Approach to Interstitial Lung Disease</i>	<i>Gary Hunninghake, MD</i>
Moderator: Andetta Hunsaker, MD		
11:15	Panel Discussion: Multidisciplinary Approach to ILD: Case Based	<i>Jeffrey Galvin, MD; Lynette Sholl, MD; Gary Hunninghake, MD; Amita Sharma, MD</i>
12:00	Unknown Cases/Discussion	<i>Andetta Hunsaker, MD</i>
12:30	LUNCH RECESS	

### Essentials of Thoracic Imaging

Moderator: Jo-Anne Shepard, MD		
1:30	The Many Faces of Atelectasis	<i>Gerald Abbott, MD</i>
2:00	Incidental Findings Below the Diaphragm on Chest CT	<i>Ruth Dunne, MD</i>
2:30	Management of Pulmonary Nodules	<i>Milena Petranovic, MD</i>
3:00	Work-up of Mediastinal Pathology	<i>Maria Barile, MD</i>
3:30	BREAK	
3:45	Chest MRI: Essentials and Enhancements	<i>Rachna Madan, MD</i>
4:15	MRI of Pleural Lesions	<i>Jeanne Ackman, MD</i>
4:45	Questions and Answers	
5:00	ADJOURN	

---

## WEDNESDAY, OCTOBER 19

7:00 Continental Breakfast

### Critical Care Radiology

Moderator: Matthew Gillman, MD		
8:00	<i>Normal Anatomy in the Thorax</i>	<i>Melissa Price, MD</i>
8:30	<i>ICU Radiology: Lines and Pathology</i>	<i>Matthew Gilman, MD</i>
9:00	<i>Aortitis - What does the Radiologist Needs to Know to Help the Clinician</i>	<i>Diana Litmanovich, MD</i>
9:30	<i>Pulmonary Embolism Update</i>	<i>Andetta Hunsaker, MD</i>
10:00	BREAK	
10:15	<i>Postoperative Complications in the Thorax</i>	<i>Rachna Madan, MD</i>
10:45	<i>Chest Trauma: A Case Based Approach</i>	<i>Efren Flores, MD</i>
11:15	<i>The Immunocompromised Host</i>	<i>Mark Hammer, MD</i>
11:45	<i>Interesting Cases/Discussion</i>	<i>Shaunagh McDermott, MD</i>
12:30	BREAK	

### Emerging Therapies and Technologies

Moderator: Andetta Hunskaer, MD		
1:30	<i>Pre-Operative CT-Guided Fiducial Placement for Localization of Small Nodules</i>	<i>Amita Sharma, MD</i>
2:00	<i>Imaging of Lung Cancer Immunotherapy</i>	<i>Florian Fintelman, MD, FRCPC</i>
2:30	<i>Dual Energy CT: Practical Applications for Chest Practice</i>	<i>Mannudeep Kalra, MD</i>
3:00	<i>Cryoablation of Thoracic Malignancies</i>	<i>Florian Fintelman, MD, FRCPC</i>
3:30	<i>Functional COPD Imaging</i>	<i>Hiroto Hatabu, MD</i>
4:00	ADJOURN	

Program changes/substitutions may be made without notice.

*Highlighted lectures have been submitted for review and qualification by the ABR for SAM credit.*

## COURSE DESCRIPTION

The rapidly expanding subspecialty of thoracic radiology makes it difficult for physicians to stay current. This three day chest course will include symposia dedicated to the multi-disciplinary assessment and management of lung cancer, lung cancer screening, approach to HRCT and interstitial lung diseases and acute cardiothoracic imaging. New modalities including PET CT, MRI, dual energy CT and dose reduction strategies will be presented.

Chest radiology is no longer a field where chest x-rays are the sole modality of imaging. The specialty is now much more comprehensive and includes computed tomography, PET CT, MRI, and interventional procedures. Interventional work includes obtaining adequate tissue for molecular work up in the growing field of molecular targets for lung cancer. The radiologist's role is expanding significantly in these areas and there is increasing need to understand the role of other specialties in optimizing patient management and outcome. The recent guidelines on lung cancer screening will increase demand and utilization of thoracic CT.

## LEARNING OBJECTIVES

*Upon completion of this activity, participants will be able to:*

- Describe the updated classification and staging algorithm of lung cancer
- Collaborate more effectively with other physicians in lung cancer diagnosis and management and evaluation of interstitial lung diseases
- Assess current thinking on isolated subsegmental pulmonary embolism
- Apply new imaging parameters on scanners in order to dramatically reduce radiation dose in all patients
- Recommend appropriate studies for evaluation of pulmonary embolism in pregnant patients

## KEY TOPICS

- Pulmonary Embolism
- Diffuse Lung Disease
- HRCT
- Lung Cancer Imaging: Detection and Staging
- Pulmonary Nodule Detection: CAD
- Functional Imaging of the Lung
- Airways Disease
- Lung Cancer Screening
- Interdisciplinary Collaboration: Radiology 360
- 3D Printing
- Dual Energy Applications in the Thoracic Imaging

## TARGET AUDIENCE

Radiologists, Primary care physicians, Pulmonologists, and other specialty physicians.

## ACCREDITATION

The Harvard Medical School is accredited by the Accreditation Council for Continuing Medical Education to provide continuing medical education for physicians.

The Harvard Medical School designates this live activity for a maximum of 22.25 *AMA PRA Category 1 Credits™*. Physicians should claim only the credit commensurate with the extent of their participation in the activity.

The Royal College of Physicians and Surgeons of Canada recognizes conferences and workshops held outside of Canada that are developed by a university, academy, hospital, specialty society or college as accredited group learning activities.

Through an agreement between the American Medical Association and the European Union of Medical Specialists, physicians may convert *AMA PRA Category 1 Credits™* to an equivalent number of European CME Credits® (ECMECs®). Information on the process of converting *AMA PRA Category 1 Credits™* to ECMECs® can be found at: [www.eaccme.eu](http://www.eaccme.eu).

## SAM CREDIT

This course is pending approval by the American Board of Radiology for Self Assessment Credits (SAM).

## ABMS/ACGME COMPETENCIES

This course is designed to meet one or more of the following American Board of Medical Specialties and Accreditation Council of Graduate Medical Education competencies: Patient care and procedural skills, medical knowledge and practice-based learning and improvement

## COURSE LOCATION / ACCOMMODATIONS / TRAVEL

All sessions will be held at The Boston Marriott Long Wharf, 296 State Street, Boston, MA 02109 (Telephone: 617-227-0800). A limited number of rooms have been reserved at the Boston Marriott Long Wharf, (800) 228-9290 or (617) 227-0800 until September 16, 2016. Please specify that you are enrolled in this activity to receive a reduced room rate of \$329 per night Single/Double. Hotel arrangements can also be made online at <http://cwp.marriott.com/boslw/chestimaging2016>

Please do not purchase nonrefundable airline ticket(s) until you have received an email from our office confirming your paid registration.

